

CENTRAL FLORIDA BUYLINES

ISM – Central Florida
PO Box 621416 Orlando, FL 32862-1416



**institute for
supply management**

*Newsletter of the ISM -
Central Florida
Vol. 2011/12, Issue 3*

ISM-CF's Mission and Vision statement is "To promote and maintain excellence among purchasing/supply management professionals through continued leadership in the areas of Ethics, Professionalism, Education, Networking, Community, and Involvement."



Upcoming Events at a Glance

Wednesday, January 11 – Professional Development and Networking Event: "Supplier Diversity – Best Practices and Lessons Learned" – Networking starts at 5:30 p.m., Meeting at 6:30 p.m., Dubsdread Golf Club

Wednesday, February 8 – Professional Development and Networking Event: "Leadership" – Networking starts at 5:30 p.m., Meeting at 6:30 p.m., Dubsdread Golf Club

March – Plant Tour, details coming soon

Wednesday, April 11 – Professional Development and Networking Event: "Intellectual Property", joint meeting with NCMA – Networking starts at 5:30 p.m., Meeting at 6:30 p.m., Dubsdread Golf Club

To Register: Visit www.ism-cf.org



The President's Corner

Dear Members,

Best Wishes for Happy Holidays

As December is a month to be spent with family and friends we have no scheduled events. Once 2012 is here you will find the calendar filled with programs and events to help you with those New Year resolutions involving your job skills or getting a certification. It is also time to submit nominations for the 2011 Richard A. Solimano Outstanding Member Award. This award was established in 2009 to honor dedication and service to the affiliate and to the Supply Management profession. All members are eligible for nomination. The nomination form can be found in the following pages and also on the website. Please take a moment to consider who among your colleagues is deserving of recognition.

Have a wonderful holiday season, and we will see you January 11th at the first PD&N of 2012.

In your service,

Bette Hallmark, C.P.M., President

pres@ism-cf.org

Professional Development and Networking Event

January 11, 2012

Networking begins at 5:30 p.m.

Dinner is served at 6:30 p.m.

Dubsdread Golf Club

549 Par Street, Orlando, Florida

TOPIC: Supplier Diversity – Best Practices and Lessons Learned



Today, more and more companies are committed to providing equal procurement opportunities to all suppliers and promoting supplier diversity throughout their supply chain. Such an initiative contributes to the utilization of diverse suppliers that reflect a company's employees,

consumers and customers, ultimately, allowing for positive impact and long term sustainability within their communities.

Sallye Thompson Marbury is Director, Supplier Diversity and Procurement at CHEP, a global leader in pallet and container pooling services, serving many of the world's largest companies. Based in Orlando, Florida, Marbury is responsible for managing the development and implementation of a world-class supplier diversity program across CHEP USA with an overall goal of growing the number of diverse suppliers within the Company's portfolio and increasing our diverse business across all functional areas within CHEP.

Marbury brings extensive and unique experience to CHEP as a former purchasing manager and director with a number of fortune 100 companies where she worked closely with these corporations to implement diversity business development and supplier diversity programs.

Continued on Page 2

Sallye has been integrally linked to National Minority Supplier Development Council, the Chicago Minority Supplier Development Council, Florida Supplier Development Council and the South Florida Supplier Development Council where she has served as an industry leader in sharing “best practices” on a number of occasions.

Marbury has also been involved in Women’s Business Enterprise National Council and Women’s Business Development Council of Chicago for several years.

Marbury spent a number of years working in operations quality in the auto industry and she has 19 years of strategic sourcing experience and 15 years of experience serving minority business enterprises in various roles. She previously held roles with Kraft Foods, General Motors, URS and with Brunswick Corporation. Sallye holds a Bachelors degree in Urban Studies and Sociology from Washington University in St. Louis, Missouri and a Masters degree in Marketing and Management from Lindenwood University in St. Charles, Missouri.

REGISTER NOW: www.ism-cf.org

Call for Nominations

Richard A. Solimano Outstanding Member Award

The Richard A. Solimano Outstanding Member Award was established in 2009 to recognize members who show devotion and dedication to the Association and procurement profession. It is the highest honor accorded to a member of ISM-Central Florida, Inc.

Criteria for Nomination

- Must be a Regular or Associate Member of ISM-Central Florida, Inc.
- Must have been a member for at least two continuous years at time of nomination.
- Must hold a position in purchasing or materials management at time of nomination.
- Has not previously received the Outstanding Member Award.

Selection Criteria

- | | |
|--------------------------------|-----|
| ○ Service to the Association | 60% |
| ○ Dedication to the profession | 10% |
| ○ Personal Integrity | 10% |
| ○ Adherence to ethics of ISM | 10% |
| ○ Professional example | 10% |

Procedure for Nomination

- Obtain nomination form from the ISM-CF website, www.ism-cf.org, or by sending an email request to Ron Carpenter at vp@ism-cf.org.
- Complete the form and return to Ron Carpenter, Vice-President, by the published deadline.

NOMINATIONS SHOULD BE EMAILED OR POSTMARKED BY JANUARY 11, 2012, OR HAND-DELIVER YOUR NOMINATION AT THE JANUARY PD&N EVENT

NOMINATIONS CLOSE AT THE END OF THE JANUARY 11 MEETING.

Any questions regarding this award can be directed to Bette Hallmark, President, or Ron Carpenter, Vice-President of ISM-CF.

Past Recipients:

2009



Ed Wainwright

2010



Ron Carpenter





**OUTSTANDING MEMBER AWARD
NOMINATION FORM**

(Use supplemental pages as necessary)

NAME OF NOMINEE: _____

NOMINEE'S EMPLOYER: _____

TELEPHONE:(_____) _____

JOB TITLE: _____

MEMBERSHIP STATUS: _____

STATEMENT INDICATING WHY NOMINEE IS DESERVING OF AWARD:

DEGREES AND CERTIFICATIONS: (GIVE DATES AND UNIVERSITY NAMES IF KNOWN)

BRIEF SUMMARY OF HOW NOMINEE HAS SUPPORTED OUR ORGANIZATION: (GIVE BOARD POSITIONS, COMMITTEE AND ANY OTHER KNOWN SERVICE)

DEDICATION TO EMPLOYER/COMPANY:

PERSONAL INTERGRITY:

ADHERENCE TO ETHICS OF ISM AND ISM-CENTRAL FLORIDA, INC.:

ADDITIONAL COMMENTS REGARDING NOMINEE:

NAME OF NOMINATOR *(print or type)*

SIGNATURE OF NOMINATOR _____ DATE _____

EMAIL OR MAIL IN CONFIDENTIAL ENVELOPE TO CURRENT VICE-PRESIDENT

MAIL TO: ISM-CENTRAL FLORIDA, INC. EMAIL TO: 1VP@ISM-CF.ORG
ATTN: VICE-PRESIDENT
P.O. BOX 621416
ORLANDO, FL 32862-1416

NOMINATIONS MUST BE RECEIVED NO LATER THAN THE CLOSE OF THE PD&N EVENT, JANUARY 11, 2012

CASINO NIGHT



As announced in our last newsletter ISM-CF is planning a “Casino Night” in 2012 as a twist to the traditional Supplier Trade Show and fund raiser. The committee to plan and organize this fun-filled evening is forming now as

we are looking to hold the event on a Friday evening in September or October. This is your opportunity to obtain organizational and leadership experience while getting to know other people in our profession. A variety of committee positions are available to fit your available time and schedule.

You can contact me at rlconcorde@embarqmail.com or my home phone at 407-847-8499 to volunteer, get additional details, or to suggest suppliers for sponsors.

Suppliers will participate as sponsors of the gaming tables where they will interact with the gamblers at their table. Other sponsorships will also be available. Please mention this event to your suppliers as they will be soon be budgeting their 2012 promotional expenses.

If you have ever wondered what is involved with being a casino dealer, you can find out as training will be offered prior to the start of the gaming for the following tables: Blackjack, Roulette, Single Craps and Hold'em Poker. Members who participated in our previous casino night stated that they had more fun being a dealer than being on the other side of the table. Video horse racing is also available if there is enough interest.

All guests will receive a raffle ticket and “Casino Money” to use once the games begin, and to whet their appetite for more casino action. Additional “Casino Money” will be available for purchase. At the close of the casino gaming tables, all winnings will be used to trade for additional raffle tickets for prize drawings.

A cash bar will be available for your pleasure. I'm looking for a supplier that might be willing to sponsor the bar. If anyone has a supplier in mind, please let me know. Great prizes and a disc jockey/emcee will add to the entertainment.

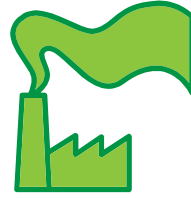
Please contact me as soon as you can to volunteer for the committee. We are also looking for roaming pit bosses to help our guests during the event, and other volunteers to assist with the evening.

This Casino Night will provide a casual, fun atmosphere for buyers and suppliers to meet and interface while providing revenue to fund continuing education and certification programs for our members.

More details to follow.

Ron Carpenter, Vice President

PLANT TOUR



Where do you want to go?

What do you want to see?

Interested in learning about a company?

If so, send in your ideas of where you would like the next plant tour to be held. The next tour is scheduled for March, but we need to hear from you first.

Send your ideas to Traci Nichols by email: educ@ism-cf.org



MEMBER SPOTLIGHT

In observance of the holidays, the Member Spotlight is taking a break and will return with the next newsletter.

Seeking Spotlight Candidates

If you know of someone that would be a good “spotlight” candidate, please have them answer the following questions and email it to Teddi444@earthlink.net. The “spotlight” candidate can be YOU! This is an opportunity for all members to get to know their fellow members a little better, especially with the last question. We have a lot of talented and professional members.

Spotlight Questions:



1. Name and Nickname
2. Place of employment and title, and/or past employment/experiences
3. Certifications
4. Education
5. Activity in Organizations/ISM
6. Hobby/Interests
7. Tell us something about yourself that no one else may know about you.



GOT NEWS?

Please send newsletter articles, announcements and news releases to David Billingsley at: comm@ism-cf.org.

